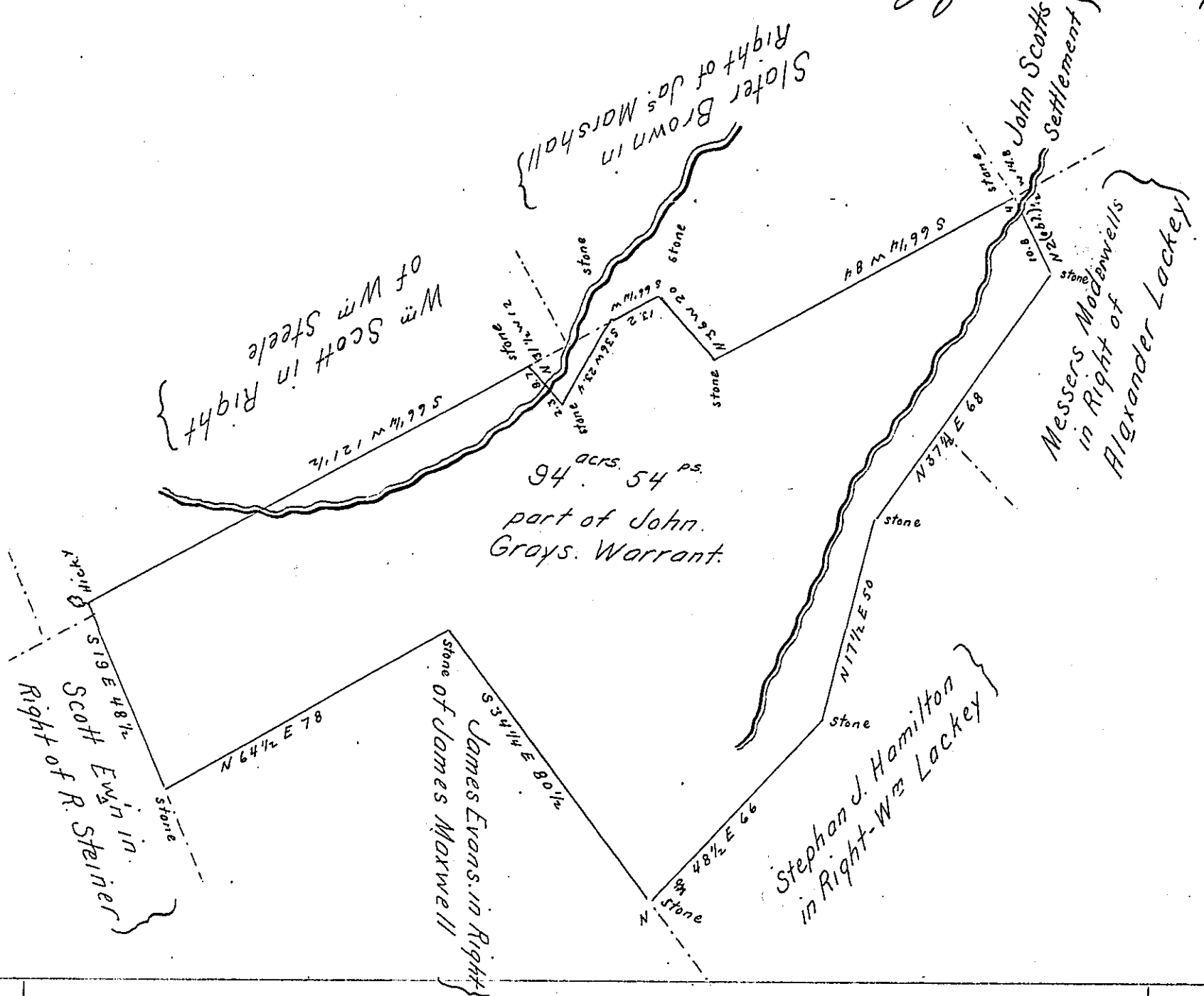


See pg. 61



The above Draught Contains 94^{acrs.} 54^{ps.} And Allowance of Six per Cent for Roads &c. Situate in Drumore township Lancaster County. And is part of a Warrant granted to John Groy the 25th day of May 1748. And by a Survey then Called 87 1/2 Acres And Now Resurveyed for Joseph Elliot. this 11th of May 1841

To Jacob Sallade Esqr. } pr. James Galwell D.S.
 Surveyor General of Penna.

IN TESTIMONY that the above is a copy of the original remaining on file in the Department of Internal Affairs of Pennsylvania, made conformably to an Act of Assembly approved the 16th day of February, 1833, I have hereunto set my Hand and caused the Seal of said Department to be affixed at Harrisburg, this fourth day of January 1905.

Loac A Brown
 Secretary of Internal Affairs.